

Evaluating the Use of Fatality Narratives for Construction Safety Training

Peregrin Spielholz
Tom Sjostrom
Randy Clark



Safety and Health Assessment and Research for Prevention
Washington State Department of Labor and Industries

spip235@Lni.wa.gov (360) 902-5691
<http://www.Lni.wa.gov/Safety/Research/FACE>

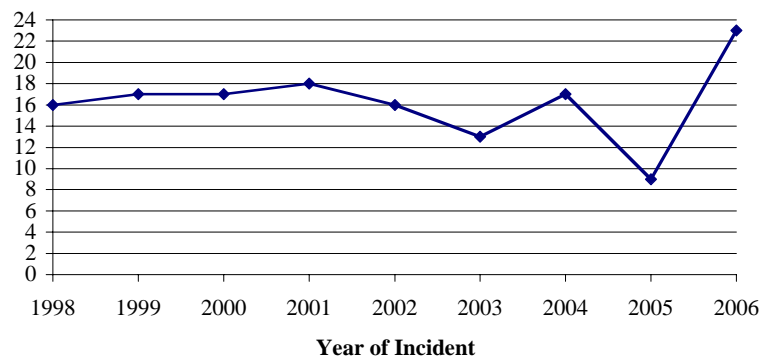
WA FACE Fatality Narrative Process

- Developed for the Following Reasons:
 - Construction is a high-risk industry for fatalities
 - 16 construction workers a year will be killed while on the job.
 - 30 construction workers a year will suffer a serious traumatic brain injury with an average cost of \$135,000.
 - Regular tool box talks provide a good forum
 - Construction industry people requested fatality information
 - Active construction safety community
 - Puget Sound Construction Safety Summit
 - Seattle Vicinity Construction Safety Council
 - (Newly formed Residential Construction Safety Group)

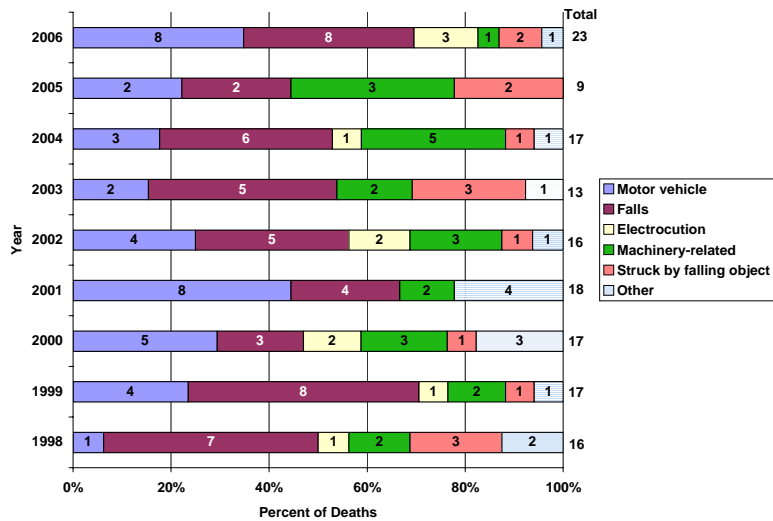
Fatality Narrative Process (cont.)

- Narratives are developed by WA FACE and reviewed with WA DOSH
- Incident description is taken largely from the investigation narrative
- Recommendations come from WA FACE staff research, DOSH input, and others as needed
- Narratives are emailed monthly to a list of 700+ recipients and posted on the WA FACE website
- Trainings conducted with employers using the narratives

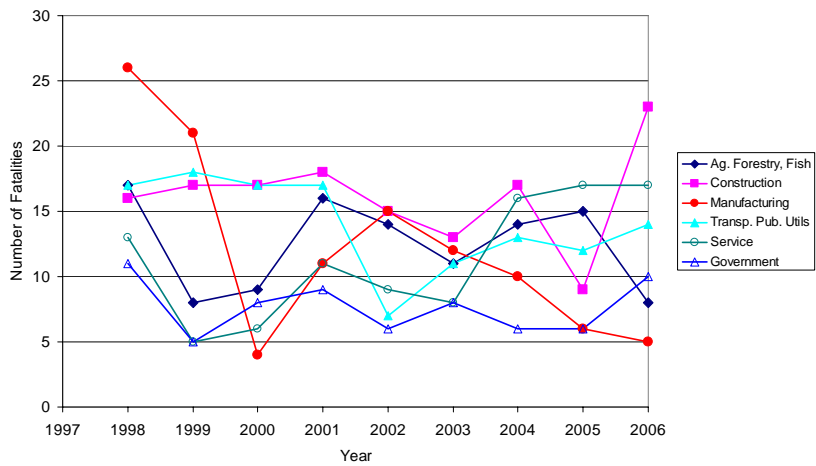
Washington State Fatalities in Construction, 1998-2006



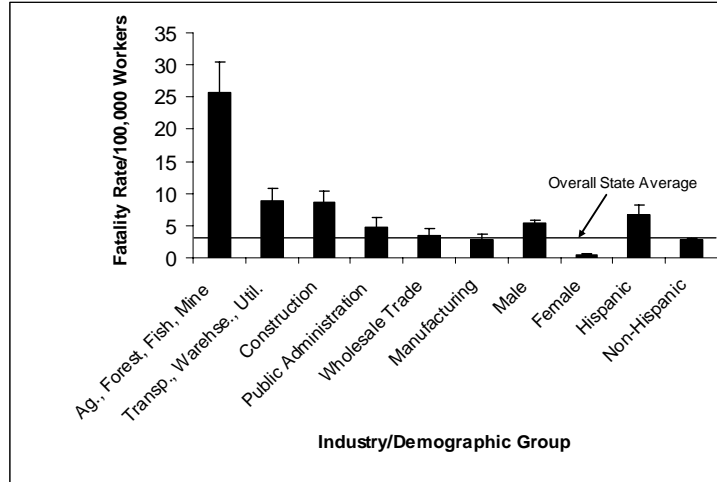
Type of Fatal Incident in Construction by Year, 1998-2006



Washington State Fatalities by Industry Group, 1998-2006



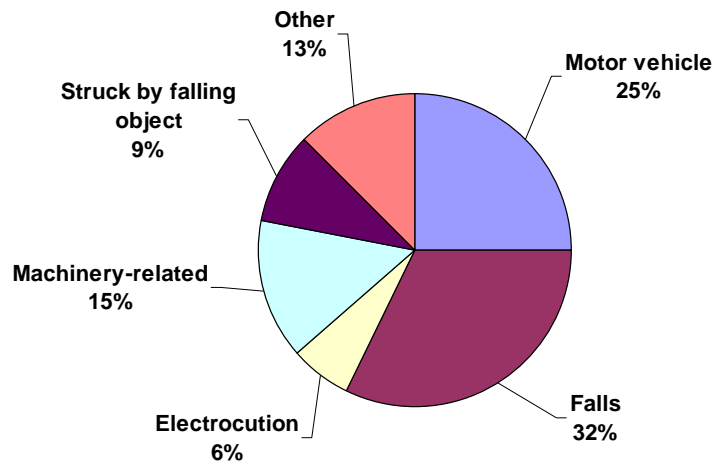
WA Fatality Rates by Industry, 1998-2002



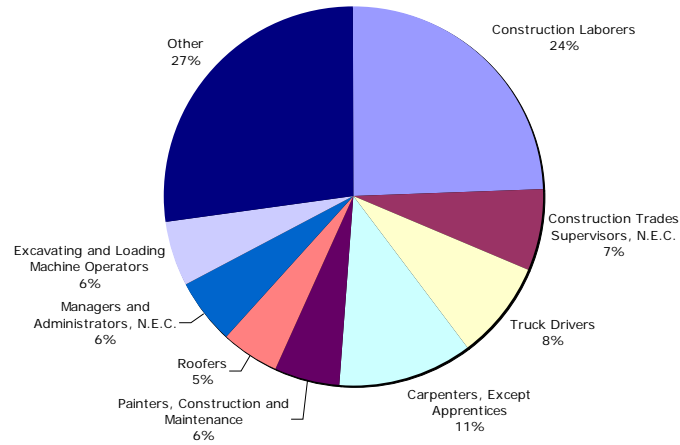
Source: WA FACE Program and CPS Data

Incident Types in Construction, 1998-2006

146 deaths



Occupations in Construction, 1998-2006



Fatality Narratives


- Some general information on the incident
- Narrative of the incident
- Recommendations/requirements for prevention
- Brief relevant statistics
- Now available in Spanish!

Fatality Narrative

Framer Falls from Roof

<p>Industry: Framing contractor Occupation: Framer Task: Trimming excess plywood sheathing from roof</p>	<p>Release Date: March 9, 2007 Case No.: WIS-AD751 SHARP Report No.: 13-AL-2007</p>
---	--

On June 26, 2006, a framer fell from a roof while removing plywood sheathing. The 24-year-old victim had worked for his current employer, a framing contractor, for about 3 years. The victim arrived at the job site, a single-family home under construction, at about 6:30 AM, so as to avoid the heat. Using a worn shirt saw, he spent about one-and-a-half hours trimming away excess overhanging plywood sheathing from the gable end on a 3/12 pitch roof. He worked up one side of the roof, and then began to work his way down the other side of the roof edge. He was cutting a section of overhanging plywood, when the sheet he was on slipped, causing him to fall 18 feet to the ground below. The sheet of plywood that he fell on was held by only one nail to the 2x8 roof joist. The victim was declared dead at the scene of skull and neck fractures. He had not been using fall protection.



Requirements/Recommendations


(I indicates items required by code)

- Employees are responsible for assessing fall hazards and implementing fall protection or protection measures before starting and during the course of construction activities.
- The employer must ensure that a fall protection work plan is completed for each site that identifies all of the fall hazards and the type of protective system to be used.
- Employees are responsible for making sure that all employees exposed to fall hazards use the protective systems and procedures in place for the work plan.
- Excess plywood sheathing spans the appropriate support members and is properly set in place with the specific type and total number of code approved fasteners and is properly secured before working or walking on the plywood.
- Employees and employers need to be trained and knowledgeable about measures necessary to address hazards associated with construction work.

State Wide Statistics: This was the 57th out of 81 work-related fatalities in Washington State during 2006, and was the 4th out of 23 construction-related fatalities.

This fatality was developed by the Washington State Department of Labor and Industries in partnership with Washington State University's Center for Occupational Safety and Health (COSH) and the Washington State Department of Social and Behavioral Sciences. The information on this page is intended for informational purposes only and does not constitute an offer of insurance or any other financial product. For more information, please contact your insurance agent.

Developed by the Washington State Fatality Investigation and Prevention Program (WIFIPP) in partnership with Washington State University's Center for Occupational Safety and Health (COSH) and the Washington State Department of Social and Behavioral Sciences. The information on this page is intended for informational purposes only and does not constitute an offer of insurance or any other financial product. For more information, please contact your insurance agent.



Using the Fatality Narratives

- Use narratives as training/discussion tools
- Hazard not necessarily found on all sites
- Job not necessarily done on all sites
- ➔ Motivated & knowledgeable workers and employers are a key to safety workplaces

Presenting a Narrative

- Narrative and Pictures
 - Laminated Pictures or Powerpoint w/video
- Interactive Discussion
- Post-Training Evaluation

Example: Residential Skylight Fall

The employer was the victim's son.

It was raining quite heavily and windy, so no work that day, but victim went to site to cover holes.

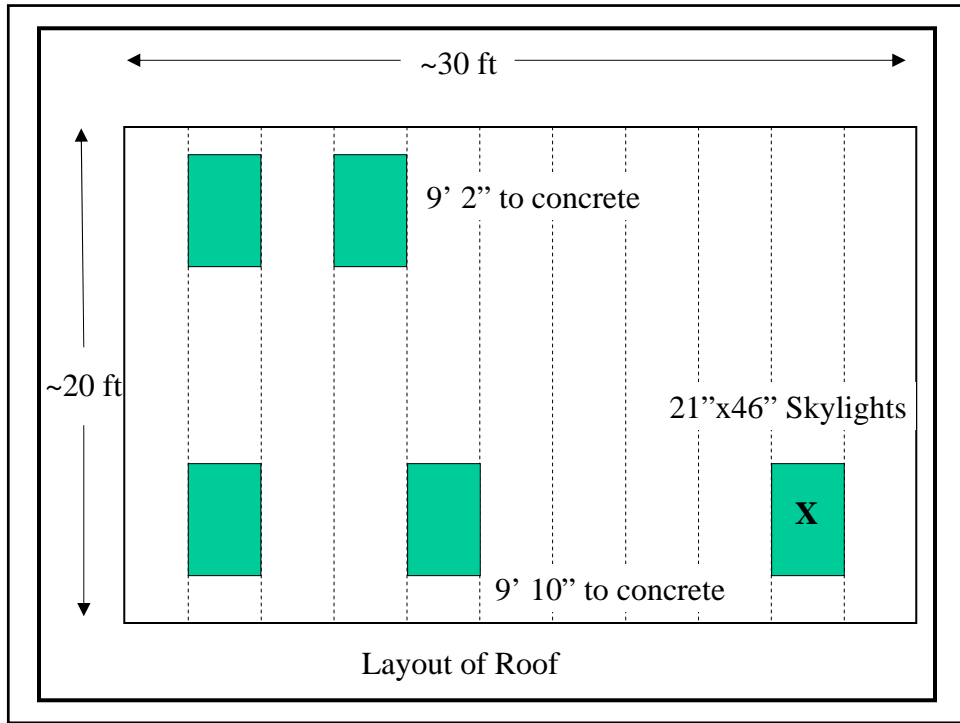
Victim tried using housewrap, affixed with a stapler, to cover holes.

There were 5 - 21"x46" skylights.

Small company, no WC coverage at the time of incident.



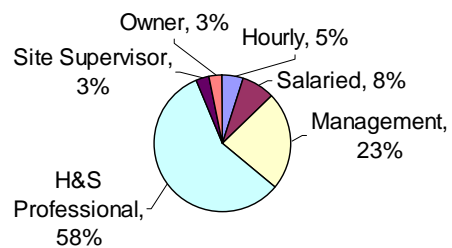




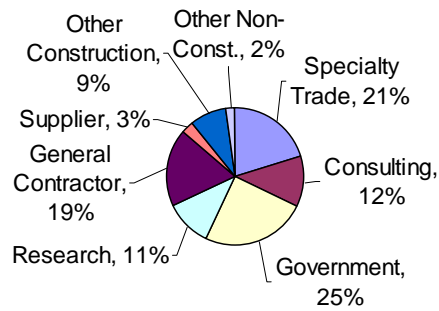
Evaluation: Web Survey of Fatality Narrative Recipients

- Fatality Narratives were sent by email to 579 valid addresses
- 106 anonymous responses were recorded after two reminders with monthly email of narratives

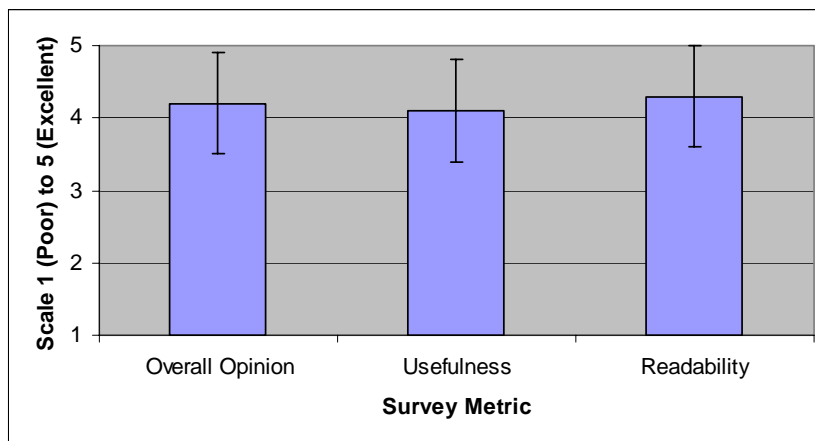
Web Survey Results: Work Position



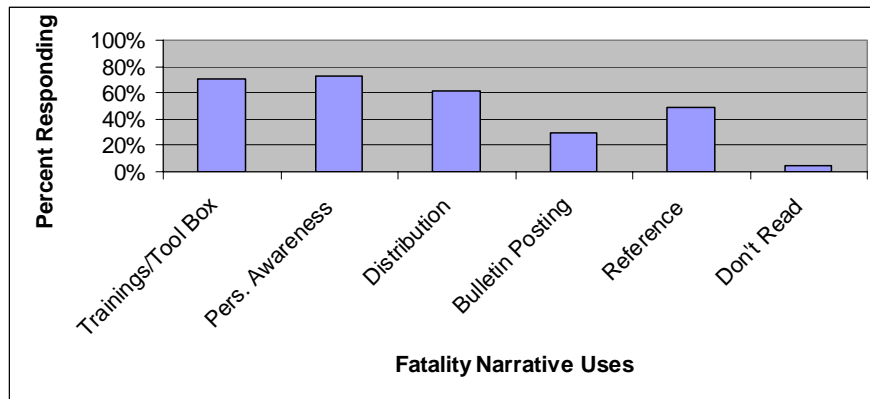
Web Survey Results: Type of Company



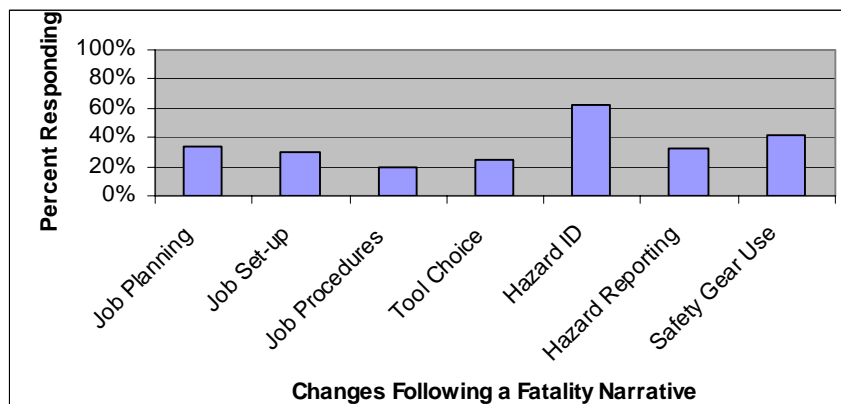
Web Survey Results: User Ratings



Web Survey Results: Use of the Fatality Narratives



Web Survey Results: Changes Made Following a Fatality Narrative



Evaluation: Worker Training Sessions

- Seven sessions were given to 379 workers in different trades at different sites
- Overall Opinion, Usefulness and Readability – All Rated “Very Good” (~4.0 out of 5.0)
- 70% planned on making changes in hazard ID
- 50% planned on making changes in job set-up
- 25% planned on making changes in tool or safety gear use

Fatality Narratives: Conclusion

- Users and trainees give the materials and process “very good” ratings
- Over 70% of recipients have made or intend to make changes in their work practices as a result of narratives
- Monthly distribution provides regular outreach communication to a large group of constituents
- Personal communication with companies has been very positive- they like getting them

Future Plans

- WA FACE has continued funding through 2010
- Translation into Spanish and coordination with day laborer groups
- Improvement of format and making media accessible for training on web site

THANK YOU!

- 57 Construction Fatality Narratives, Data, and Publications on Hazards Available:

www.lni.wa.gov/safety/research/face

Peregrin Spielholz

spip235@lni.wa.gov

(360) 902-5691

